

基本参数/Rated Characteristics



CFS AC240V / DC150V series

额定电压/Rated Voltage: AC240V/DC150V

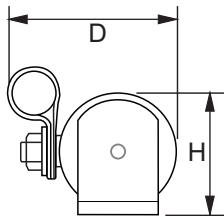
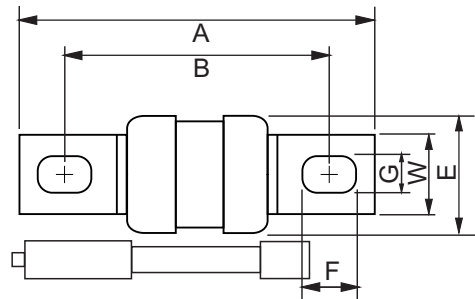
额定电流/Rated Current: 20–450A

分断能力/Interrupting: 100kA

执行标准/Standard: IEC 60269–4

使用类别/Class of Operation: aR

尺寸/Dimensions–mm



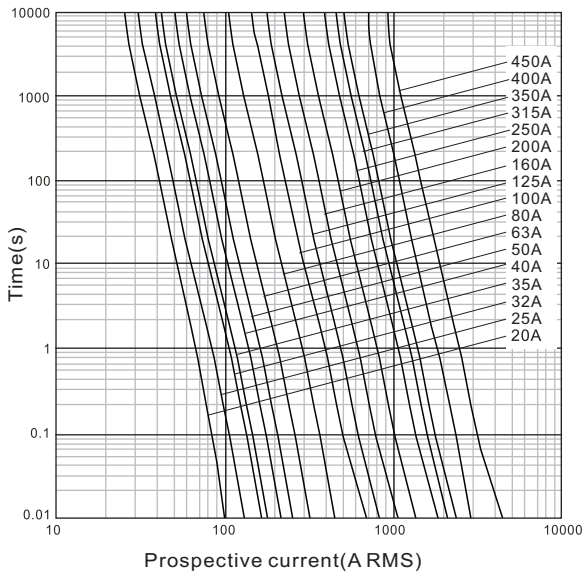
\* 带指示的型号加“X”  
\* The indicator type is add the 'X' after the no indicator type name.

Product No.	Rated Current									
	A	B	C	D	E	F	G	H	W	T
CFS-18-20	58.5	43.5	27.5	28 (max)	18	9.3	6.4	18.6	12	2
CFS-18-25										
CFS-18-32										
CFS-18-35										
CFS-18-40										
CFS-18-50										
CFS-18-63										
CFS-18-80										
CFS-18-100	76	53.5	30.5	33.5 (max)	23.5	15.7	9	27	20	2.9
CFS-18-125										
CFS-24-160										
CFS-24-200	86.5	59.5	29.5	41 (max)	31	15.9	10.3	35.6	25	2.5
CFS-24-250										
CFS-31-315										
CFS-31-350	82.5	54.5	30.5	48 (max)	38	15.8	11	40.7	25	3
CFS-38-400										
CFS-38-450										

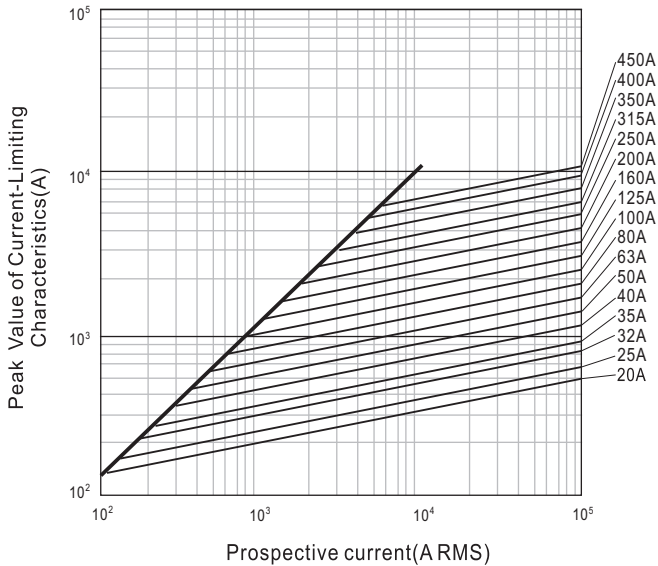
规格参数/specifications

Product No.	Rated Current (A)	Pre-arc I²t (A²s)	Total I²t (A²s)	Watts Loss (W)
CFS-18-20	20	26	380	1.8
CFS-18-25	25	49	650	2.3
CFS-18-32	32	80	1000	3.0
CFS-18-35	35	100	1230	3.2
CFS-18-40	40	135	1700	3.5
CFS-18-50	50	220	2650	4.8
CFS-18-63	63	365	4303	6.5
CFS-18-80	80	650	7585	7.8
CFS-18-100	100	1025	11853	9.8
CFS-18-125	125	1645	18848	13.0
CFS-24-160	160	1585	19210	17.0
CFS-24-200	200	2935	34574	24.5
CFS-24-250	250	4800	47610	33.0
CFS-31-315	315	7323	58760	35.5
CFS-31-350	350	9486	75136	44.0
CFS-38-400	400	13077	103378	46.0
CFS-38-450	450	17644	138000	51.0

特性曲线/Characteristics Curve



Current Characteristics  
时间电流特性图



Current-Limiting Characteristics  
截断电流特性图

## 基本参数/Rated Characteristics



### CFS AC690V / DC500V series

额定电压/Rated Voltage: AC690V/DC500V

额定电流/Rated Current: 20–630A

分断能力/Interrupting: AC80kA/DC50kA

执行标准/Standard: IEC 60269–4

使用类别/Class of Operation: aR

## 尺寸/Dimensions–mm

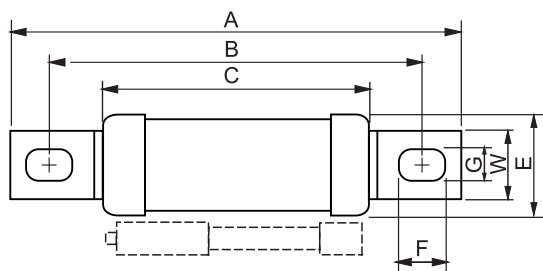


图1

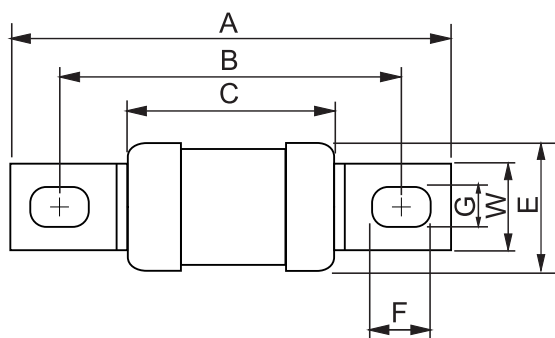
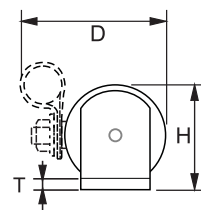
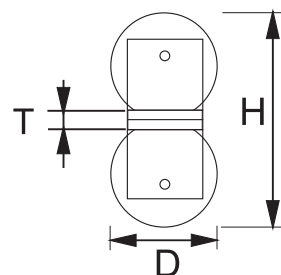


图2



\* 带指示的型号加“X”

\* The indicator type is add the 'X' after the no indicator type name.

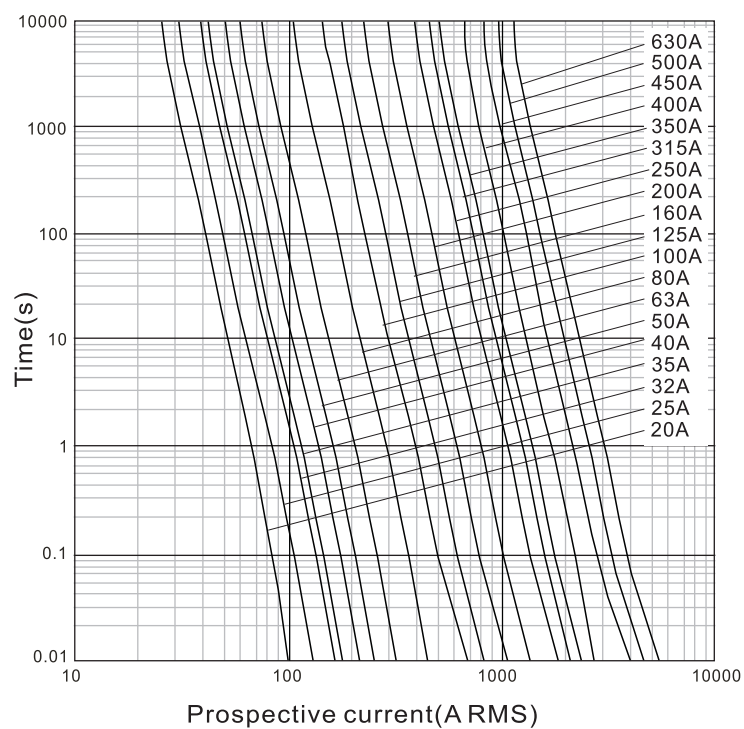
## 尺寸/Dimensions—mm

Product No.	Rated Current (A)	Dimension									
		A	B	C	D	E	F	G	H	W	T
CFS-18-20	20	77.5	63	47.5	28 (max)	18	9.3	6.5	18.5	12	2
CFS-18-25	25										
CFS-18-32	32										
CFS-18-40	40										
CFS-18-50	50										
CFS-18-63	63										
CFS-18-80	80										
CFS-18-100	100										
CFS-38-125	125	106.5	79.5	54.5	48 (max)	38	15.8	10	41	25	3
CFS-38-160	160										
CFS-38-200	200										
CFS-38-250	250										
CFS-38-280	280										
CFS-38-315	315										
CFS-38-350	350										
CFS-38-400	400										
CFSS-38-450	450	106.5	79.5	54.5	38	38	15.8	10	82	25	6
CFSS-38-500	500										
CFSS-38-560	560										
CFSS-38-630	630										

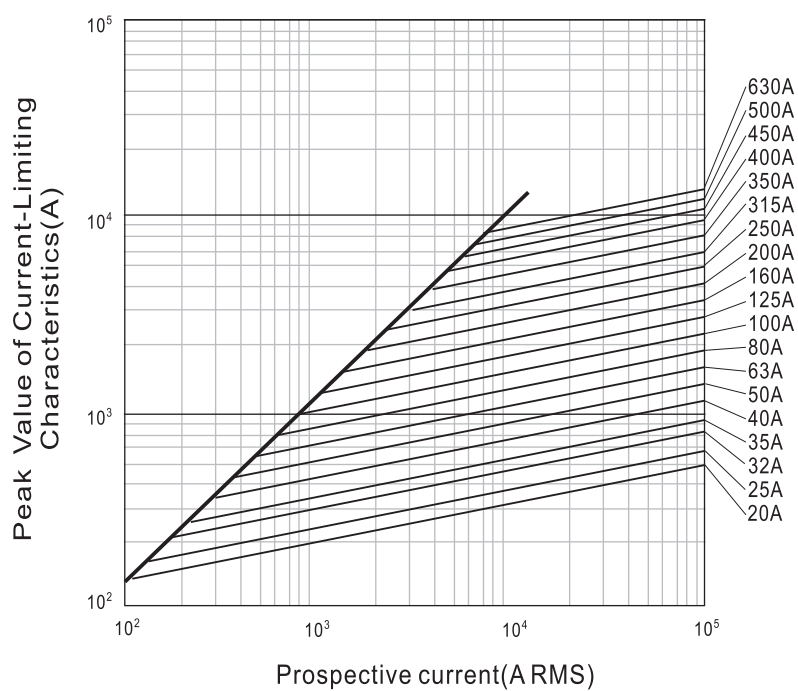
## 规格参数/specifications

Product No.	Rated Current (A)	Pre-arc I <sup>2</sup> t (A <sup>2</sup> s)	Total I <sup>2</sup> t (A <sup>2</sup> s)	Watts Loss (W)
CFS-18-20	20	50	620	6.8
CFS-18-25	25	60	750	7.3
CFS-18-32	32	110	1300	10.0
CFS-18-40	40	174	2200	14.2
CFS-18-50	50	260	3650	16.2
CFS-18-63	63	465	6303	18.5
CFS-18-80	80	950	11585	23.5
CFS-18-100	100	1525	18853	26.7
CFS-38-125	125	1045	9848	36.0
CFS-38-160	160	1385	10210	42.0
CFS-38-200	200	3535	25574	50.0
CFS-38-250	250	4800	32610	61.0
CFS-38-280	280	7323	58760	66.0
CFS-38-315	315	9486	75136	74.5
CFS-38-350	350	13077	103378	79.0
CFS-38-400	400	24644	204580	82.5
CFSS-38-450	450	33560	288369	78.0
CFSS-38-500	500	46639	399801	82.0
CFSS-38-560	560	64718	551233	85.0
CFSS-38-630	630	89797	762665	95.0

## 特性曲线/Characteristics Curve



Current Characteristics  
时间电流特性图



Current-Limiting Characteristics  
截断电流特性图



## **Zhejiang Chifeng Electric Co., Ltd.**

Jiaxi Village, Liushi Town, Yueqing City, Zhejiang Province, China

TEL: +86-577-61757776 FAX: +86-577-61716120

www.wzcfdq.com

---

# **CF-NGT000/00 FUSE SPECIFICATION**

## **1. Product Description**

CF-NGT000/00 series high-speed square body fuses are specially designed to protect DC common bus, DC drives, power converters/rectifiers and reduced rated voltage starters. The CF-NGT000 series fuses are fast-acting fuse up to 690V/700V, ranging from 10 A to 315 A in the NH000 and NH00 body sizes. CF-NGT000/00 series fuses are designed to meet GB/T13539.4 and IEC60269-4 standards.

## **2. Normal Working Conditions**

Ambient Temperature:-40°C- + 90°C

Equipment installation height:less than 2000m

## **3. Use Category**

aR means partial-range breaking capacity with faster acting for the protection of semiconductor devices.

gR means full-range breaking capacity with faster acting for the protection of semiconductor devices.

## **4. Structure**

Fuse Link is made of pure silver,welding low tin and encapsulated in the high-strength porcelain,the fuse tube filled with high pure quartz sand with chemically processed as a arc medium,fuse body is connected with contacting terminals by spot welding.



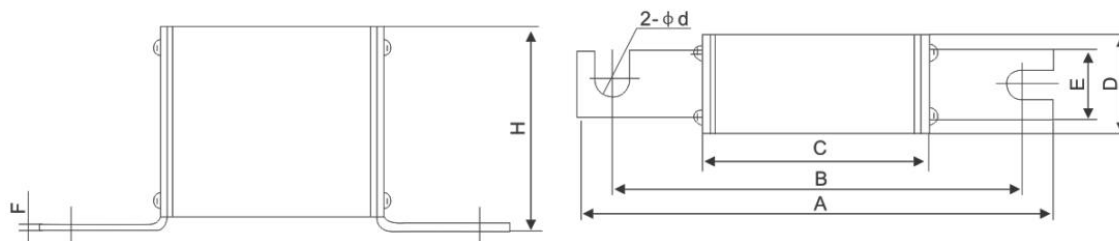
## Zhejiang Chifeng Electric Co., Ltd.

Jiaxi Village, Liushi Town, Yueqing City, Zhejiang Province, China

TEL: +86-577-61757776 FAX: +86-577-61716120

www.wzcfdq.com

### 5. Main Technical Specification



Overall dimension (mm)								
Size	A	B	C	D	E	F	H	Ød
000	101	77	51	21	21	2	42	9
00	102	77	51	29	21	2.5	48	9

Model	Rated Voltage	Rated Current	Class of Operation	SIZE (mm)
CF-NGT000	690Vac/700Vdc	10A-315A	aR/gR	See Above Drawing
	Standard	Breaking Capacity	Time Constant	
	IEC60269	100kA AC/50kA DC	≤3ms	

Model	Rated Voltage	Rated Current	Class of Operation	SIZE (mm)
CF-NGT00	690Vac/700Vdc	350A-400A	aR	See Above Drawing
	Standard	Breaking Capacity	Time Constant	
	IEC60269	100kA AC/50kA DC	≤3ms	



## Zhejiang Chifeng Electric Co., Ltd.

Jiaxi Village, Liushi Town, Yueqing City, Zhejiang Province, China

TEL: +86-577-61757776 FAX: +86-577-61716120

www.wzcfdq.com

ORDER NUMBER	AMPERE RATING (A)	VOLTAGE RATING	Breaking Capacity	MELTING (PRE-ARC) I <sup>2</sup> T (A <sup>2</sup> S)	TOTAL CLEARING I <sup>2</sup> T (A <sup>2</sup> S)	WATTS LOSS (W)
CF-NGT000-10	10	690Vac/700Vdc	100kA AC/50kA DC	4	26	4.0
CF-NGT000-16	16	690Vac/700Vdc	100kA AC/50kA DC	7	48	6.0
CF-NGT000-20	20	690Vac/700Vdc	100kA AC/50kA DC	13	81	7.8
CF-NGT000-25	25	690Vac/700Vdc	100kA AC/50kA DC	21	135	9.6
CF-NGT000-32	32	690Vac/700Vdc	100kA AC/50kA DC	38	280	10.3
CF-NGT000-40	40	690Vac/700Vdc	100kA AC/50kA DC	72	450	12.3
CF-NGT000-50	50	690Vac/700Vdc	100kA AC/50kA DC	109	800	15.6
CF-NGT000-63	63	690Vac/700Vdc	100kA AC/50kA DC	202	1500	16.5
CF-NGT000-80	80	690Vac/700Vdc	100kA AC/50kA DC	370	2400	19.3
CF-NGT000-100	100	690Vac/700Vdc	100kA AC/50kA DC	680	5000	24.0
CF-NGT000-125	125	690Vac/700Vdc	100kA AC/50kA DC	1200	9500	28.7
CF-NGT000-160	160	690Vac/700Vdc	100kA AC/50kA DC	2245	16000	32.1
CF-NGT000-200	200	690Vac/700Vdc	100kA AC/50kA DC	4485	29000	37.0
CF-NGT000-250	250	690Vac/700Vdc	100kA AC/50kA DC	8200	55000	42.5
CF-NGT000-315	315	690Vac/700Vdc	100kA AC/50kA DC	12580	90000	53.8
CF-NGT000-350	350	690Vac/700Vdc	100kA AC/50kA DC	14500	105000	63.5
CF-NGT000-400	400	690Vac/700Vdc	100kA AC/50kA DC	19500	135000	74.0





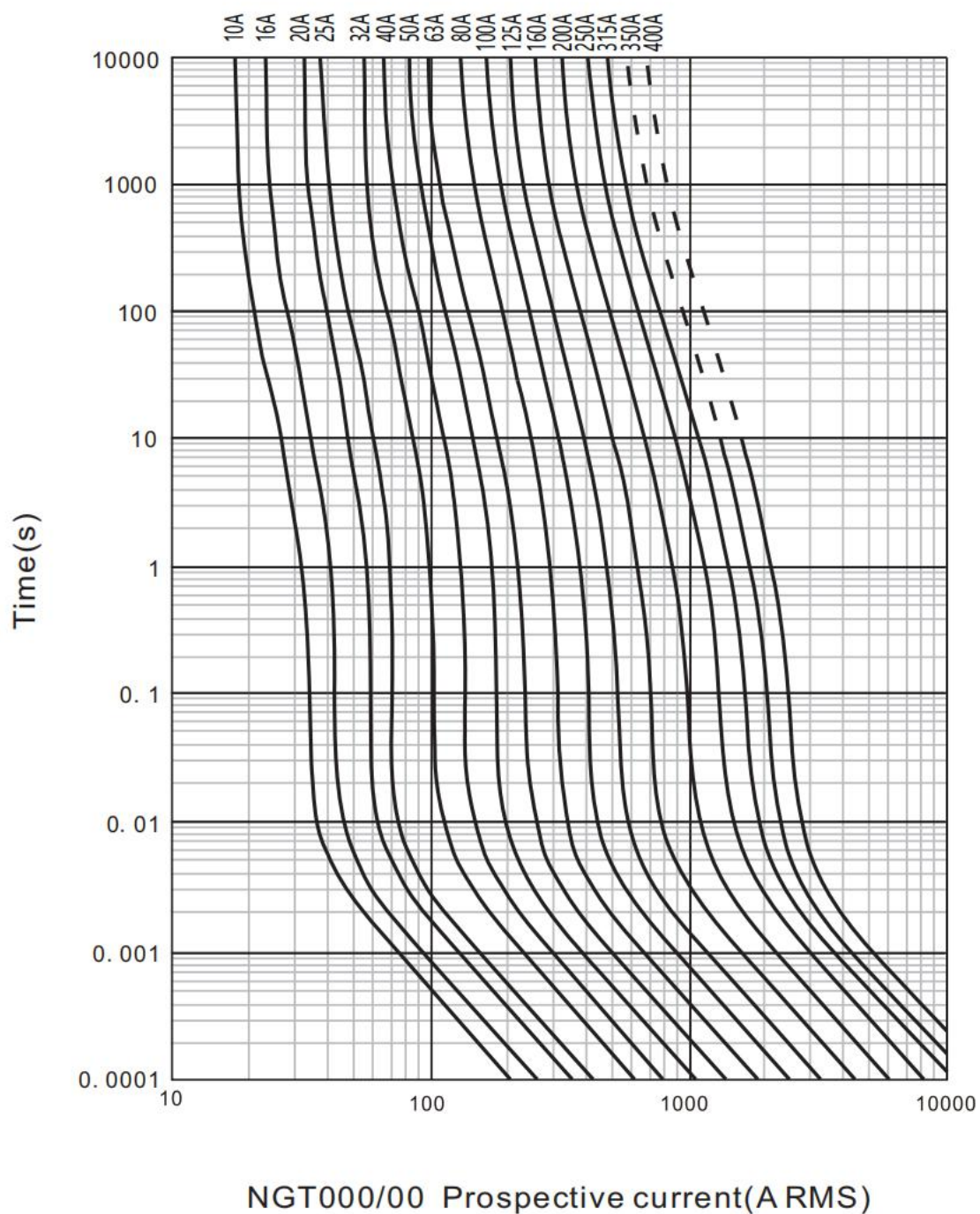
## Zhejiang Chifeng Electric Co., Ltd.

Jiaxi Village, Liushi Town, Yueqing City, Zhejiang Province, China

TEL: +86-577-61757776 FAX: +86-577-61716120

www.wzcfdq.com

### 6. Characteristic Curve







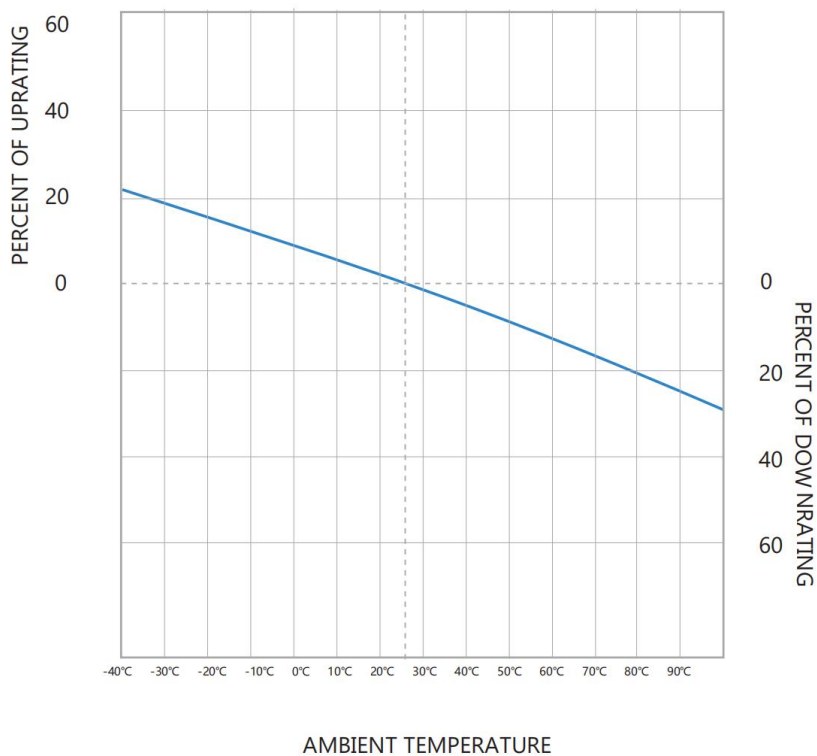
## Zhejiang Chifeng Electric Co., Ltd.

Jiaxi Village, Liushi Town, Yueqing City, Zhejiang Province, China

TEL: +86-577-61757776 FAX: +86-577-61716120

[www.wzcfdq.com](http://www.wzcfdq.com)

### Temperature Derating Curve (Temperature of Air Immediately Surrounding Fuse)





## Zhejiang Chifeng Electric Co., Ltd.

Jiaxi Village, Liushi Town, Yueqing City, Zhejiang Province, China

TEL: +86-577-61757776 FAX: +86-577-61716120

www.wzcfdq.com

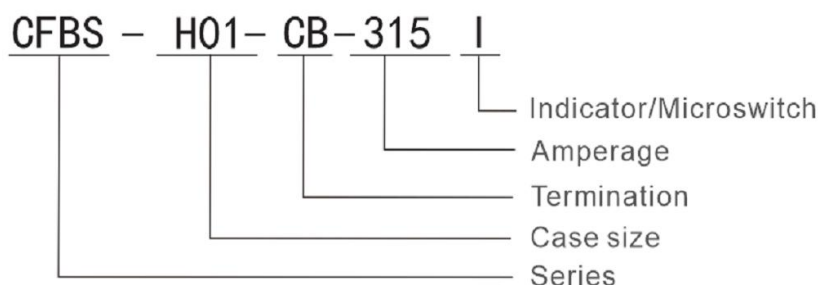
---

# CFBS-H01 AC1250V/DC1000V FUSE SPECIFICATION

## 1. Product Description

CFBS-H01 series AC1250V/DC1000V high-speed square body fuses are specially designed to protect battery energy storage systems (ESS), photovoltaic inverters, and many dc applications. The CFBS-H01 series fuses are fast-acting fuse up to 1000 V dc, ranging from 40A to 315A in the NH01 package sizes. CFBS-H01 series fuses are designed to meet IEC60269.4 standard and upcoming battery protection fuse standards.

## 2. Catalogue Symbol



For example catalogue number **CFBS-H01-CB-315** represents the ChiFeng Battery Storage Fuse, **NH 01** fuse body size, Knife-blade termination (**CB**=blade **BB**=Bolted-blade **DB**=Din-blade, **FE**=Flush End, rated at **315A**, with **Indicator**.

## 3. Normal Working Conditions

Ambient Temperature: -40°C - + 90°C

Equipment installation height: less than 2000m

(if you want use exceeding this height, please tell us in advance, we can design according to your requirements)

## Zhejiang Chifeng Electric Co., Ltd.

Jiaxi Village, Liushi Town, Yueqing City, Zhejiang Province, China

TEL: +86-577-61757776 FAX: +86-577-61716120

www.wzcfdq.com

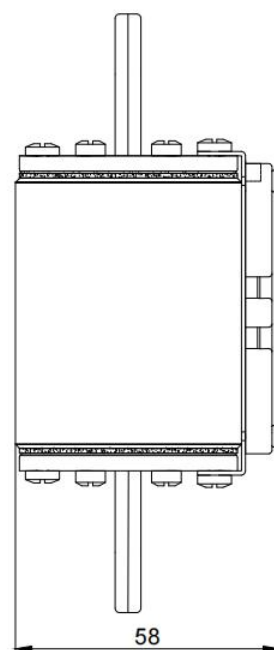
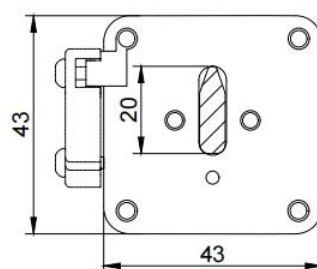
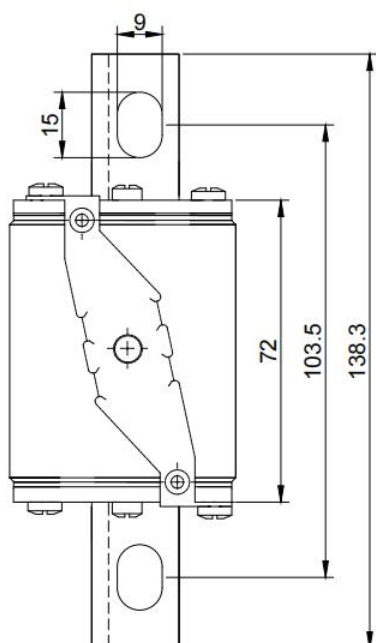
### 4. Use Category

aR means partial-range breaking capacity with faster acting for the protection of semiconductor devices.

### 5. Structure

Fuse Link is made of pure silver, welding low tin and encapsulated in the high-strength porcelain, the fuse tube filled with high pure quartz sand with chemically processed as a arc medium, fuse body is connected with contacting terminals by spot welding.

### 6. Main Technical Specification



CFBS-H01-BB-□□□-I



## Zhejiang Chifeng Electric Co., Ltd.

Jiaxi Village, Liushi Town, Yueqing City, Zhejiang Province, China

TEL: +86-577-61757776 FAX: +86-577-61716120

www.wzcfdq.com

Model	Rated Voltage	Rated Current	Class of Operation	SIZE (mm)
CFBS-H01	AC 1250V DC 1000V	40A-315A	aR	See Above Drawing
	Standard	Breaking Capacity	Time Constant	
	IEC60269	100kA	$\leq 3\text{ms}$	

ORDER NUMBER	AMPERE RATING (A)	VOLTAGE RATING(Vac)	Breaking Capacity	MELTING (PRE-ARC) I <sub>2</sub> T (A <sup>2</sup> S)	TOTAL CLEARING I <sub>2</sub> T (A <sup>2</sup> S) 1250Vac	TOTAL CLEARING I <sub>2</sub> T (A <sup>2</sup> S) 1000Vdc	WATTS LOSS (W)
CFBS-H01-40	40	1000Vdc	100 kA	110	840	300	18
CFBS-H01-50	50	1000Vdc	100 kA	210	1630	850	22
CFBS-H01-63	63	1000Vdc	100 kA	360	2800	1100	24
CFBS-H01-80	80	1000Vdc	100 kA	680	5290	2700	26
CFBS-H01-100	100	1000Vdc	100 kA	1100	8550	4350	30
CFBS-H01-125	125	1000Vdc	100 kA	1800	14000	7100	45
CFBS-H01-160	160	1000Vdc	100 kA	3300	25600	13000	55
CFBS-H01-200	200	1000Vdc	100 kA	5500	43000	21700	65
CFBS-H01-250	250	1000Vdc	100 kA	10500	82000	41000	72
CFBS-H01-280	280	1000Vdc	100 kA	12600	98000	49000	75
CFBS-H01-315	315	1000Vdc	100 kA	22000	171000	84000	80

CFBS-H01-BB Prospective current(A RMS)

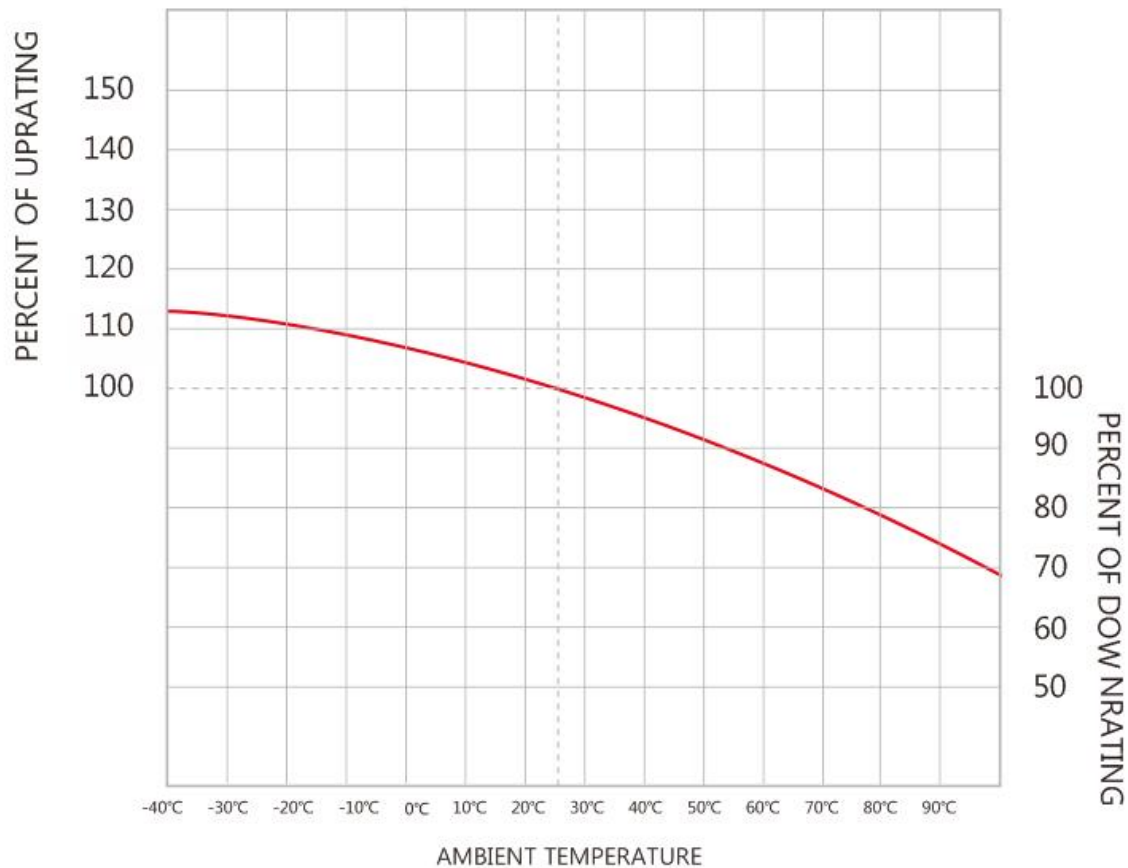


## Zhejiang Chifeng Electric Co., Ltd.

Jiaxi Village, Liushi Town, Yueqing City, Zhejiang Province, China

TEL: +86-577-61757776 FAX: +86-577-61716120

[www.wzcfdq.com](http://www.wzcfdq.com)



**Temperature Derating Curve (Temperature of Air Immediately Surrounding Fuse)**



## Zhejiang Chifeng Electric Co., Ltd.

Jiaxi Village, Liushi Town, Yueqing City, Zhejiang Province, China

TEL: +86-577-61757776 FAX: +86-577-61716120

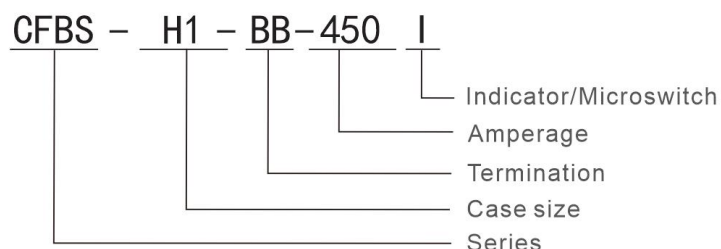
www.wzcfdq.com

# CFBS-H1 AC1250V/DC1000V FUSE SPECIFICATION

## 1. Product Description

CFBS-H1 series AC1250V/DC1000 V high-speed square body fuses are specially designed to protect battery energy storage systems (ESS), photovoltaic inverters, and many dc applications. The CFBS-H1 series fuses are fast-acting fuse up to 1250Vac/1000 Vdc, ranging from 350A to 450A in the NH1 package sizes. CFBS-H1 series fuses are designed to meet IEC60269.4 standard and upcoming battery protection fuse standards.

## 2. Catalogue Symbol



For example catalogue number **CFBS-H1-BB-450I** represents the ChiFeng Battery Storage Fuse, **NH1** fuse body size, Bolted-blade termination (CB=blade **BB**=Bolted-blade DB=Din-blade, FE=Flush End, rated at **450A**, with Indicator.

## 3. Normal Working Conditions

Ambient Temperature: -40°C - + 90°C

Equipment installation height: less than 2000m

(if you want use exceeding this height, please tell us in advance, we can design according to your requirements)





## Zhejiang Chifeng Electric Co., Ltd.

Jiaxi Village, Liushi Town, Yueqing City, Zhejiang Province, China

TEL: +86-577-61757776 FAX: +86-577-61716120

www.wzcfdq.com

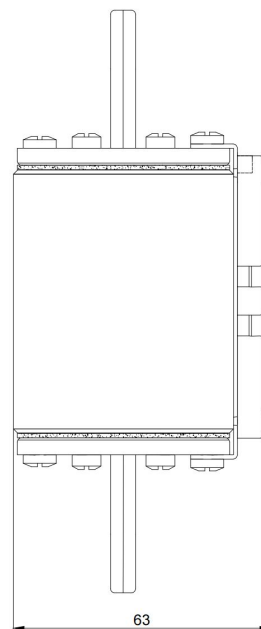
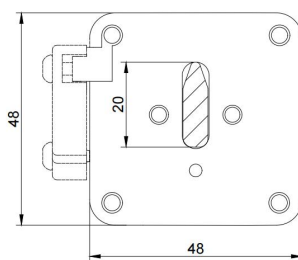
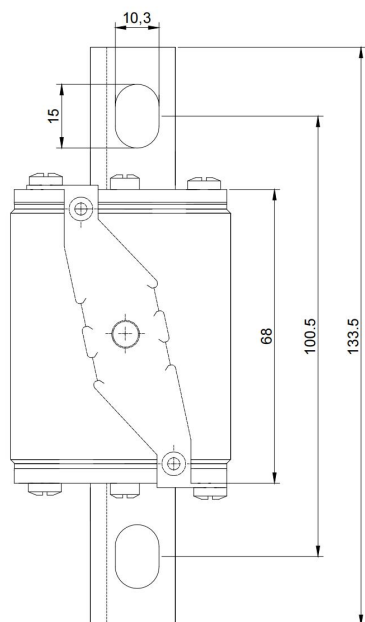
### 4. Use Category

aR means partial-range breaking capacity with faster acting for the protection of semiconductor devices.

### 5. Structure

Fuse Link is made of pure silver, welding low tin and encapsulated in the high-strength porcelain, the fuse tube filled with high pure quartz sand with chemically processed as a arc medium, fuse body is connected with contacting terminals by spot welding.

### 6. Main Technical Specification



CFBS-H1-BB-□□□I



## Zhejiang Chifeng Electric Co., Ltd.

Jiaxi Village, Liushi Town, Yueqing City, Zhejiang Province, China

TEL: +86-577-61757776 FAX: +86-577-61716120

www.wzcfdq.com

Model	Rated Voltage	Rated Current	Class of Operation	SIZE (mm)
CFBS-H1	AC 1250V DC 1000V	350A-450A	aR	See Above Drawing
	Standard	Breaking Capacity	Time Constant	
	IEC60269	100kA	$\leq 3\text{ms}$	

ORDER NUMBER	AMPERE RATING (A)	VOLTAGE RATING(Vac)	Breaking Capacity	MELTING (PRE-ARC) I <sup>2</sup> T (A <sup>2</sup> S)	TOTAL CLEARING I <sup>2</sup> T (A <sup>2</sup> S) 1250Vac	TOTAL CLEARING I <sup>2</sup> T (A <sup>2</sup> S) 1000Vdc	WATTS LOSS (W)
CFBS-H1-BB-350	350	1250Vac 1000Vdc	100 kA	27500	215000	155000	79
CFBS-H1-BB-400I	400	1250Vac 1000Vdc	100 kA	28150	220000	166000	80
CFBS-H1-BB-450I	450	1250Vac 1000Vdc	100 kA	40450	316000	205000	89



## Zhejiang Chifeng Electric Co., Ltd.

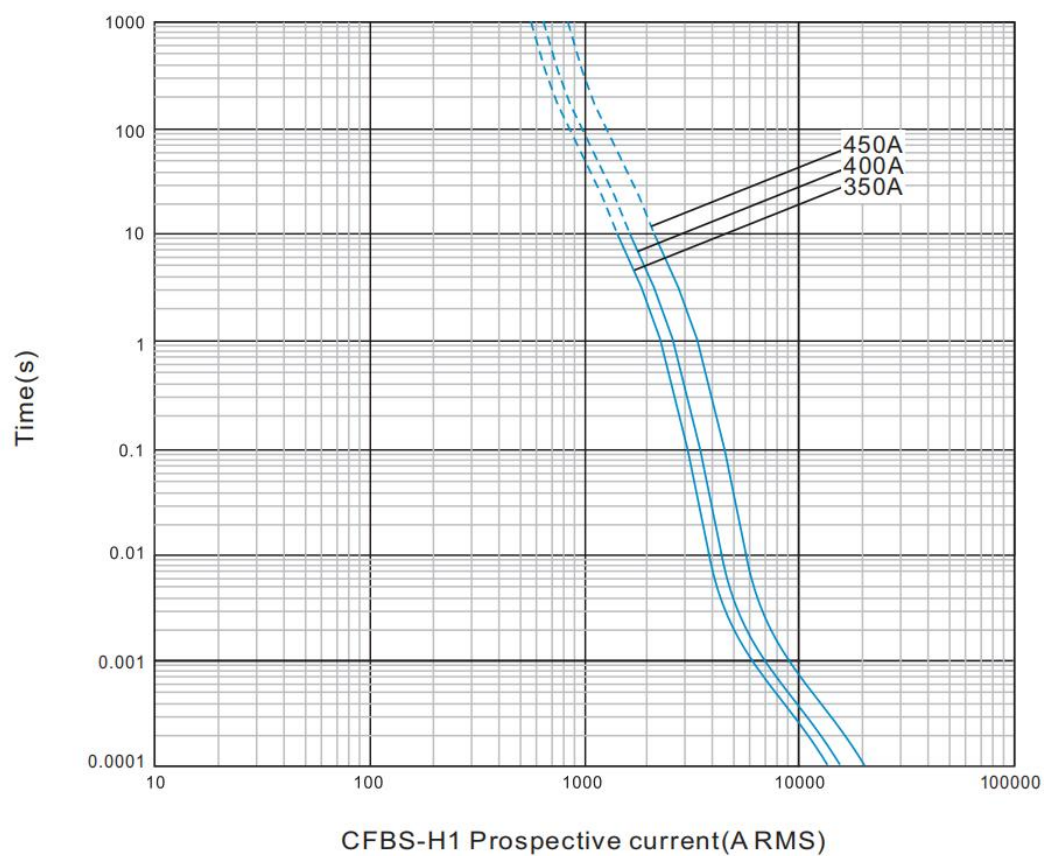
Jiaxi Village, Liushi Town, Yueqing City, Zhejiang Province, China

TEL: +86-577-61757776 FAX: +86-577-61716120

[www.wzcfdq.com](http://www.wzcfdq.com)

---

### 7. Characteristic Curve



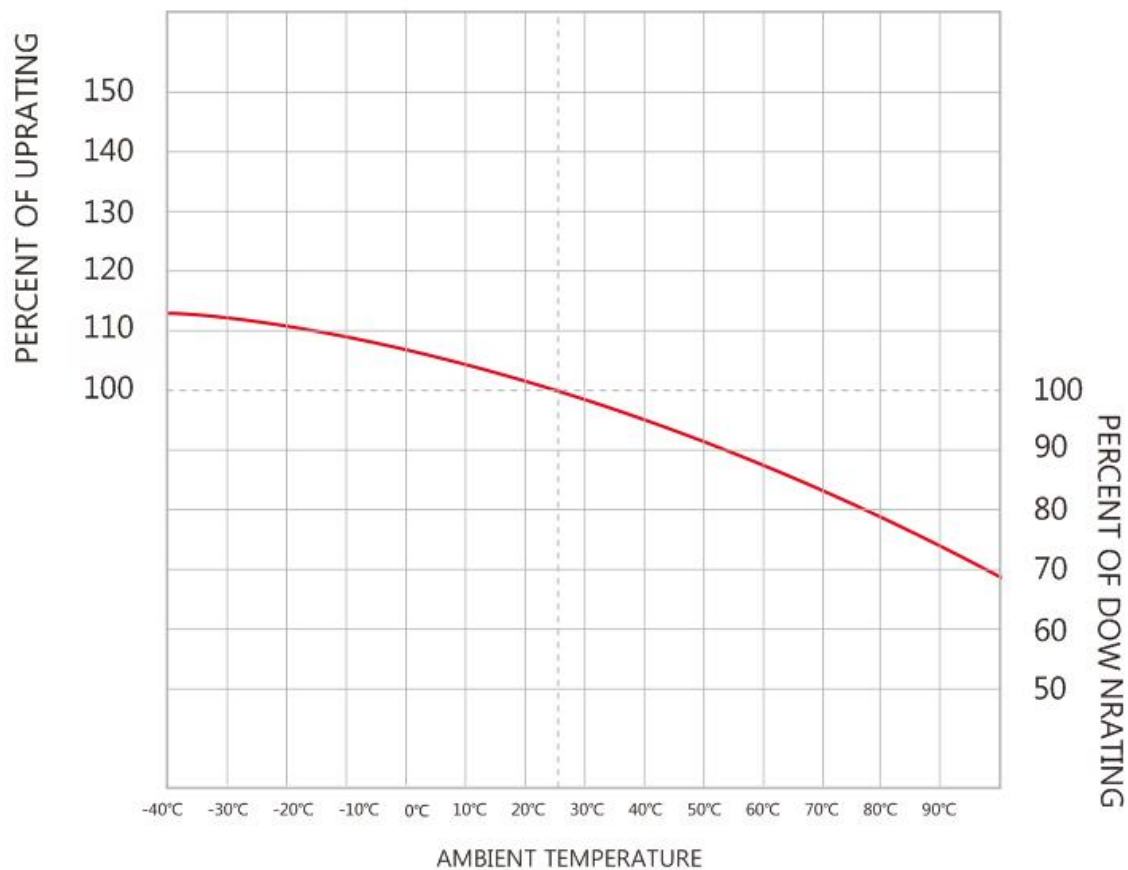


## Zhejiang Chifeng Electric Co., Ltd.

Jiaxi Village, Liushi Town, Yueqing City, Zhejiang Province, China

TEL: +86-577-61757776 FAX: +86-577-61716120

[www.wzcfdq.com](http://www.wzcfdq.com)



**Temperature Derating Curve (Temperature of Air Immediately Surrounding Fuse)**



## Zhejiang Chifeng Electric Co., Ltd.

Jiaxi Village, Liushi Town, Yueqing City, Zhejiang Province, China

TEL: +86-577-61757776 FAX: +86-577-61716120

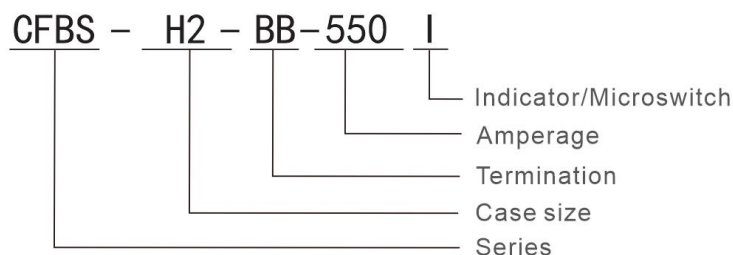
www.wzcfdq.com

# CFBS-H2 AC1250V/DC1000V FUSE SPECIFICATION

## 1. Product Description

CFBS-H2 series AC1250V/DC1000 V high-speed square body fuses are specially designed to protect battery energy storage systems (ESS), photovoltaic inverters, and many dc applications. The CFBS-H2 series fuses are fast-acting fuse up to 1250Vac/1000 V dc, ranging from 500A to 550A in the NH2 package sizes. CFBS-H2 series fuses are designed to meet IEC60269.4 standard and upcoming battery protection fuse standards.

## 2. Catalogue Symbol



For example catalogue number **CFBS-H2-BB-550I** represents the ChiFeng Battery Storage Fuse, **NH2** fuse body size, Bolted-blade termination (CB=blade **BB**=Bolted-blade DB=Din-blade, FE=Flush End, rated at **550A**, with Indicator.

## 3. Normal Working Conditions

Ambient Temperature: -40°C - + 90°C

Equipment installation height: less than 2000m

(if you want use exceeding this height, please tell us in advance, we can design according to



## **Zhejiang Chifeng Electric Co., Ltd.**

Jiaxi Village, Liushi Town, Yueqing City, Zhejiang Province, China

TEL: +86-577-61757776 FAX: +86-577-61716120

[www.wzcfdq.com](http://www.wzcfdq.com)

---

your requirements)

#### **4. Use Category**

aR means partial-range breaking capacity with faster acting for the protection of semiconductor devices.

#### **5. Structure**

Fuse Link is made of pure silver,welding low tin and encapsulated in the high-strength porcelain,the fuse tube filled with high pure quartz sand with chemically processed as a arc medium,fuse body is connected with contacting terminals by spot welding.



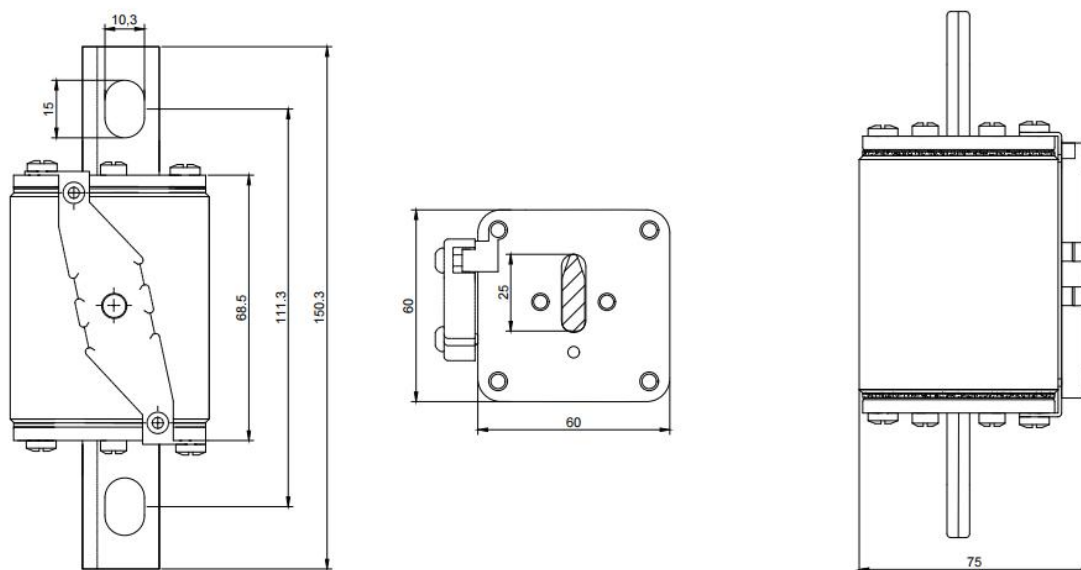
## Zhejiang Chifeng Electric Co., Ltd.

Jiaxi Village, Liushi Town, Yueqing City, Zhejiang Province, China

TEL: +86-577-61757776 FAX: +86-577-61716120

www.wzcfdq.com

### 6. Main Technical Specification



CFBS-H2-BB-□□□I

Model	Rated Voltage	Rated Current	Class of Operation	SIZE (mm)
CFBS-H2	AC 1250V DC 1000V	500A-550A	aR	See Above Drawing
	Standard	Breaking Capacity	Time Constant	
	IEC60269	100kA	≤3ms	

ORDER NUMBER	AMPERE RATING (A)	VOLTAGE RATING(Vac)	Breaking Capacity	MELTING (PRE-ARC) I <sub>T</sub> (A <sup>2</sup> S)	TOTAL CLEARING I <sub>2</sub> T (A <sup>2</sup> S) 1250Vac	TOTAL CLEARING I <sub>2</sub> T (A <sup>2</sup> S) 1000Vdc	WATTS LOSS (W)
CFBS-H2-BB-500I	500	1250Vac 1000Vdc	100 kA	56000	435000	245000	118
CFBS-H2-BB-550I	550	1250Vac 1000Vdc	100 kA	77000	550000	293000	120





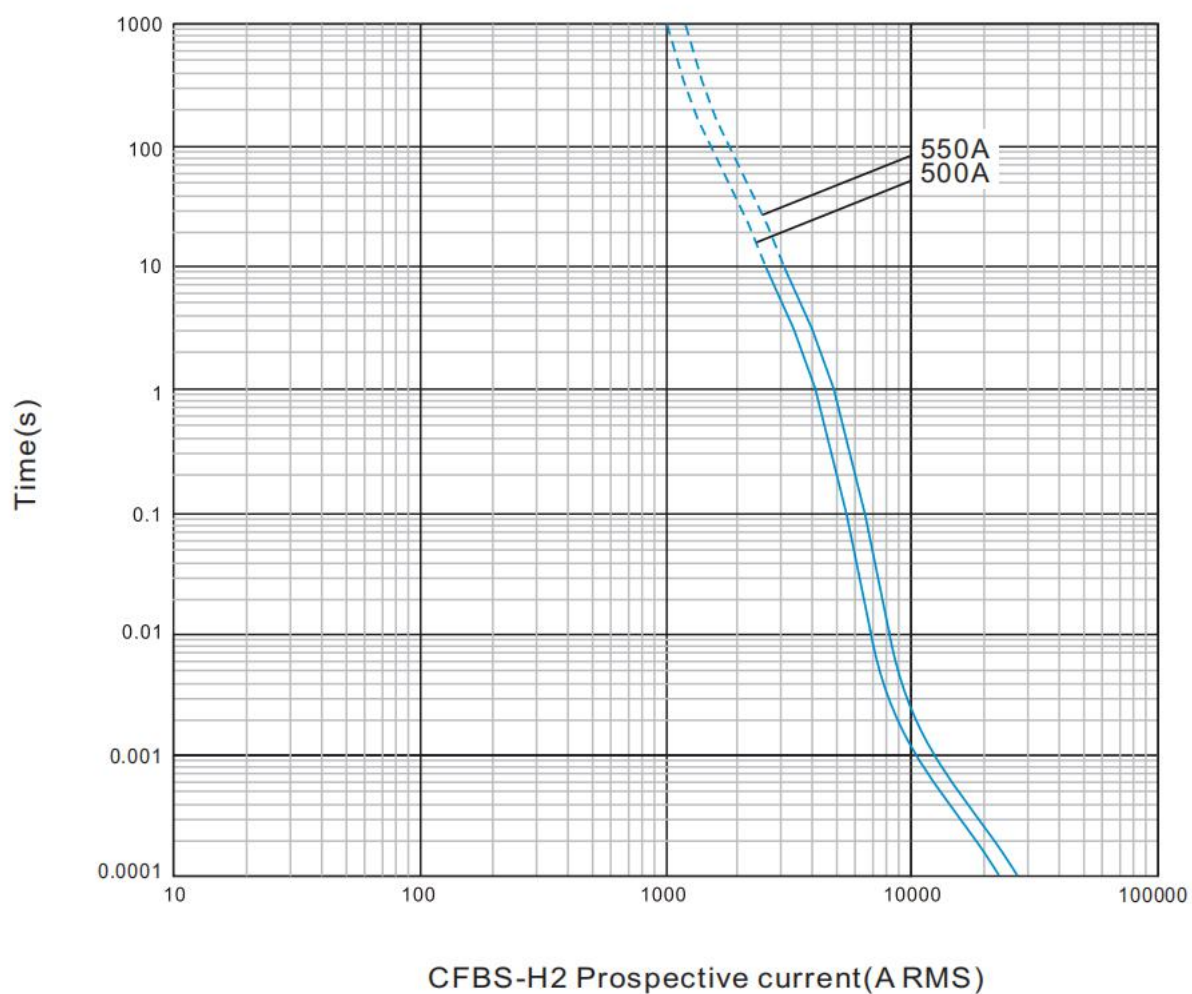
## Zhejiang Chifeng Electric Co., Ltd.

Jiaxi Village, Liushi Town, Yueqing City, Zhejiang Province, China

TEL: +86-577-61757776 FAX: +86-577-61716120

www.wzcfdq.com

### 7. Characteristic Curve



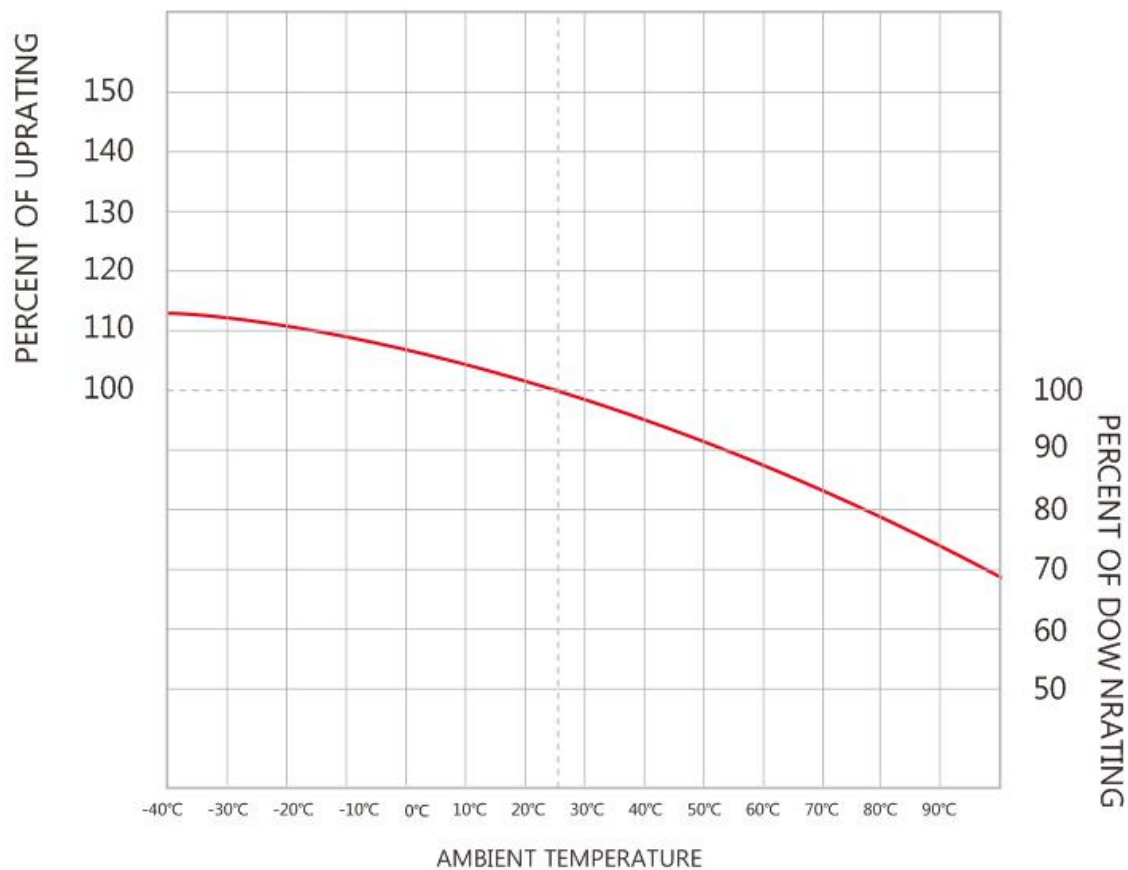


## Zhejiang Chifeng Electric Co., Ltd.

Jiaxi Village, Liushi Town, Yueqing City, Zhejiang Province, China

TEL: +86-577-61757776 FAX: +86-577-61716120

[www.wzcfdq.com](http://www.wzcfdq.com)



**Temperature Derating Curve (Temperature of Air Immediately Surrounding Fuse)**



## Zhejiang Chifeng Electric Co., Ltd.

Jiaxi Village, Liushi Town, Yueqing City, Zhejiang Province, China

TEL: +86-577-61757776 FAX: +86-577-61716120

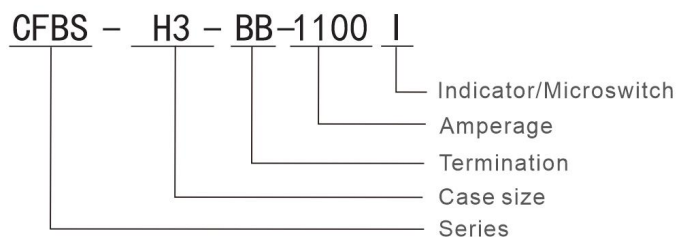
www.wzcfdq.com

# CFBS-H3 AC1250V/DC1000V FUSE SPECIFICATION

## 1. Product Description

CFBS-H3 series AC1250V/DC1000V high-speed square body fuses are specially designed to protect battery energy storage systems (ESS), photovoltaic inverters, and many dc applications. The CFBS-H3 series fuses are fast-acting fuse up to 1250Vac/1000Vdc, ranging from 630A to 1100A in the NH3 package sizes. CFBS-H3 series fuses are designed to meet IEC60269.4 standard and upcoming battery protection fuse standards.

## 2. Catalogue Symbol



For example catalogue number **CFBS-H3-BB-1100I** represents the ChiFeng Battery Storage Fuse, **NH3** fuse body size, Bolted-blade termination (CB=blade **BB**=Bolted-blade DB=Din-blade, FE=Flush End, rated at 1100A, with Indicator.

## 3. Normal Working Conditions

Ambient Temperature: -40°C - + 90°C

Equipment installation height: less than 2000m

(if you want use exceeding this height, please tell us in advance, we can design according to your requirements)



## Zhejiang Chifeng Electric Co., Ltd.

Jiaxi Village, Liushi Town, Yueqing City, Zhejiang Province, China

TEL: +86-577-61757776 FAX: +86-577-61716120

www.wzcfdq.com

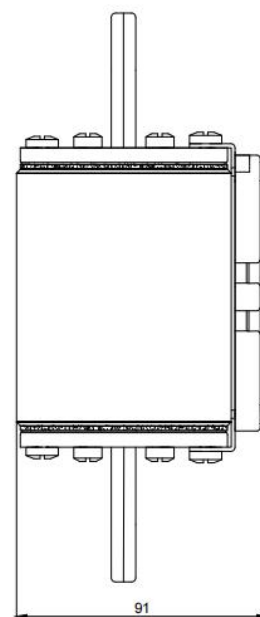
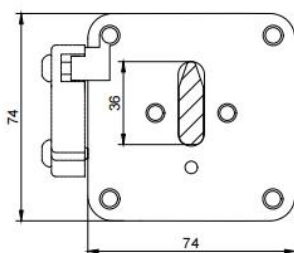
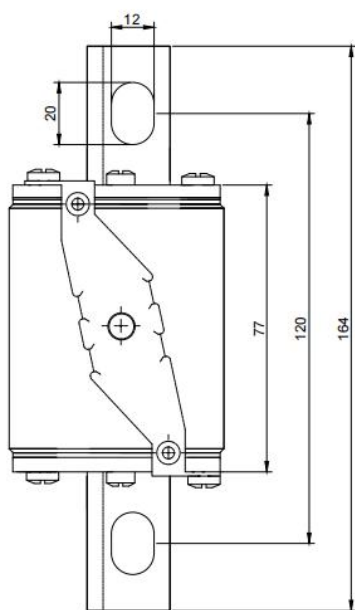
### 4. Use Category

aR means partial-range breaking capacity with faster acting for the protection of semiconductor devices.

### 5. Structure

Fuse Link is made of pure silver, welding low tin and encapsulated in the high-strength porcelain, the fuse tube filled with high pure quartz sand with chemically processed as a arc medium, fuse body is connected with contacting terminals by spot welding.

### 6. Main Technical Specification



CFBS-H3-BB-□□□I



## Zhejiang Chifeng Electric Co., Ltd.

Jiaxi Village, Liushi Town, Yueqing City, Zhejiang Province, China

TEL: +86-577-61757776 FAX: +86-577-61716120

www.wzcfdq.com

Model	Rated Voltage	Rated Current	Class of Operation	SIZE (mm)
CFBS-H3	AC 1250V DC 1000V	630A-1100A	aR	See Above Drawing
	Standard	Breaking Capacity	Time Constant	
	IEC60269	100kA	≤3ms	

ORDER NUMBER	AMPERE RATING (A)	VOLTAGE RATING(Vac)	Breaking Capacity	MELTING (PRE-ARC) I <sup>2</sup> T (A <sup>2</sup> S)	TOTAL CLEARING I <sup>2</sup> T (A <sup>2</sup> S) 1250Vac	TOTAL CLEARING I <sup>2</sup> T (A <sup>2</sup> S) 1000Vdc	WATTS LOSS (W)
CFBS-H3-BB-630I	630	1250Vac 1000Vdc	100 kA	85000	664000	395000	165
CFBS-H3-BB-700I	700	1250Vac 1000Vdc	100 kA	141000	1100000	585000	170
CFBS-H3-BB-800I	800	1250Vac 1000Vdc	100 kA	190000	1480000	875000	180
CFBS-H3-BB-900I	900	1250Vac 1000Vdc	100 kA	275000	2150000	1287500	190
CFBS-H3-BB-1000I	1000	1250Vac 1000Vdc	100 kA	360000	2810000	1832000	195
CFBS-H3-BB-1100I	1100	1250Vac 1000Vdc	100 kA	520000	4000000	2554000	205



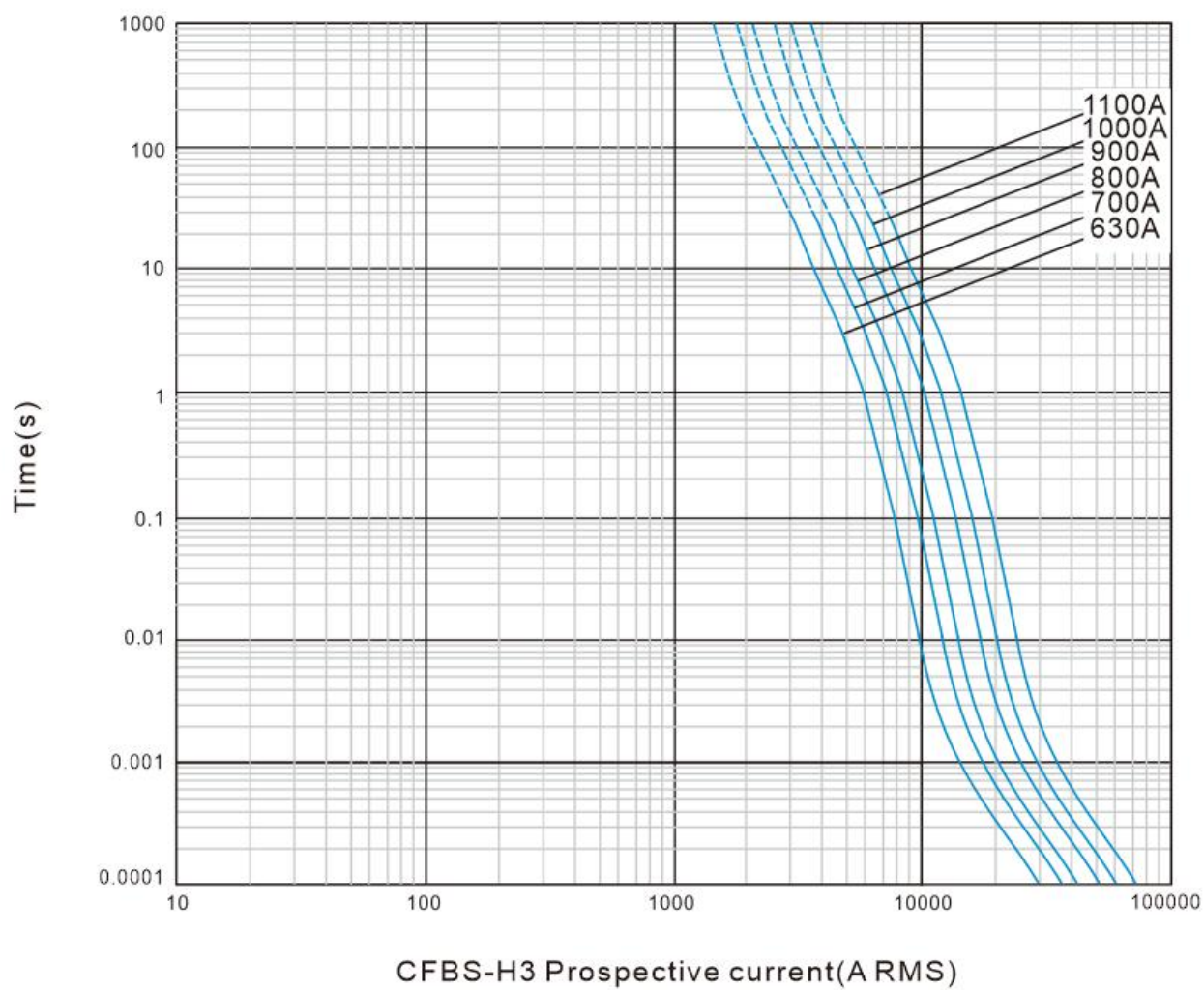
## Zhejiang Chifeng Electric Co., Ltd.

Jiaxi Village, Liushi Town, Yueqing City, Zhejiang Province, China

TEL: +86-577-61757776 FAX: +86-577-61716120

[www.wzcfdq.com](http://www.wzcfdq.com)

### 7. Characteristic Curve



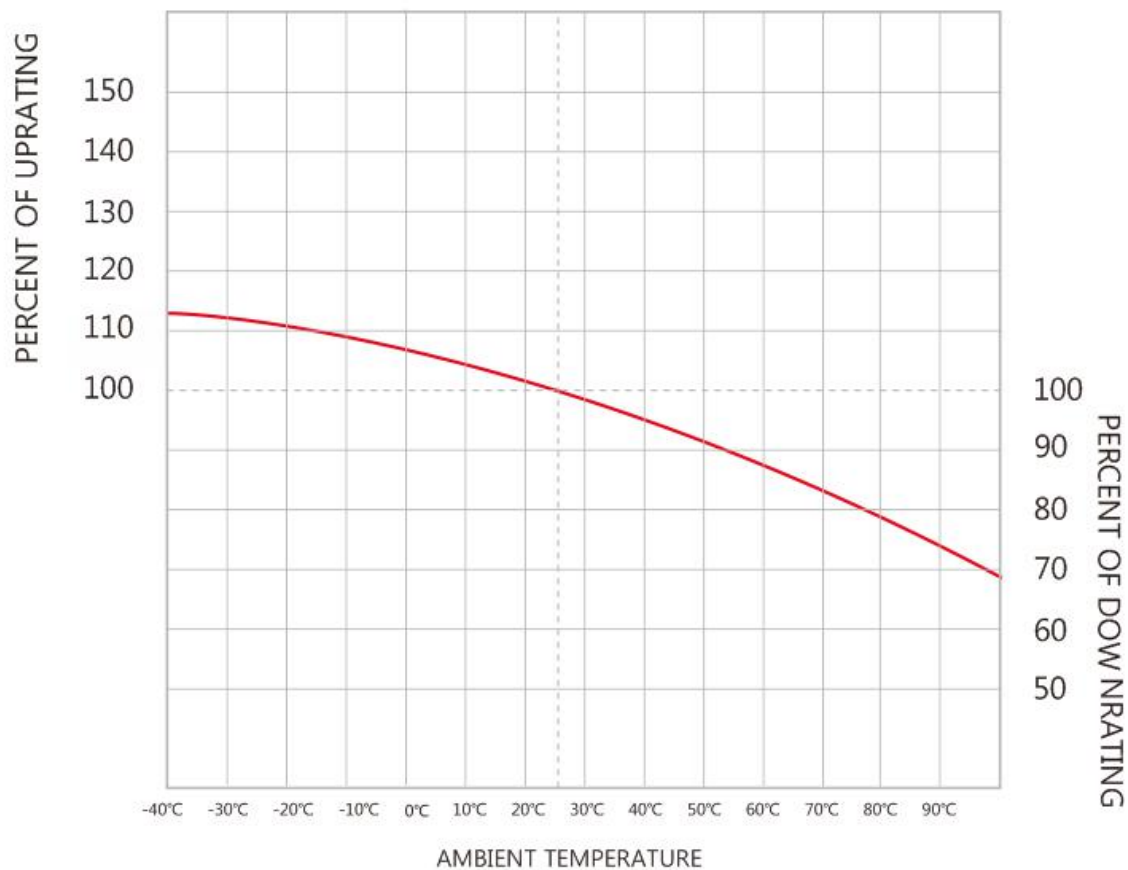


## Zhejiang Chifeng Electric Co., Ltd.

Jiaxi Village, Liushi Town, Yueqing City, Zhejiang Province, China

TEL: +86-577-61757776 FAX: +86-577-61716120

[www.wzcfdq.com](http://www.wzcfdq.com)



**Temperature Derating Curve (Temperature of Air Immediately Surrounding Fuse)**